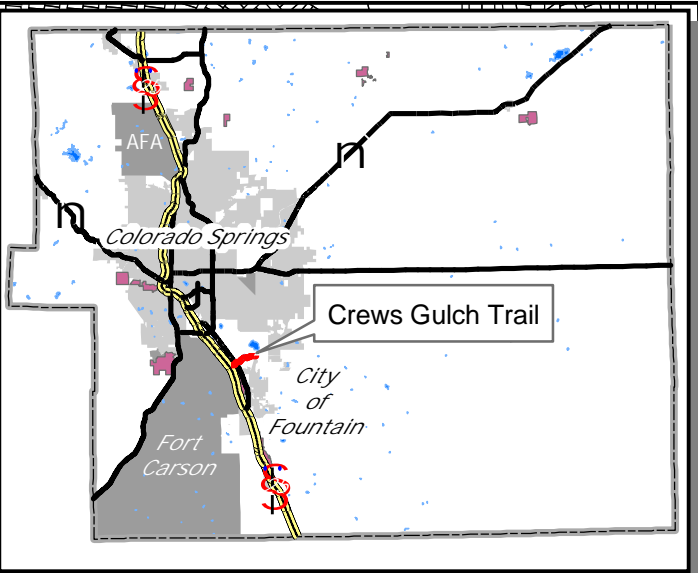


0 1,500 3,000 Feet  
1 inch equals 1,500 feet



Crews Gulch Trail

Ceresa Park - Fountain Creek Regional Trail/Crews Gulch Trail Connection

Crews Gulch Trail  
2.2 Miles

Fountain Creek Regional Trail

**EL PASO COUNTY PARKS**  
**CREWS GULCH TRAIL**

COPYRIGHT 2004 by the Board of County Commissioners, El Paso County, Colorado. All rights reserved. No part of this document or data contained hereon may be reproduced; used to prepare derivative products; or distributed without the specific written approval of the Board of County Commissioners, El Paso County, Colorado. This document was prepared from the best data available at the time of plotting and is for internal use only. El Paso County, Colorado, makes no claim as to the completeness or accuracy of the data contained hereon.



*Big Johnson Res.*

*Mc Crae Res.*

*Fountain Valley School*

**Widefield Park**

Hwy. 85/87

Hwy. 16

Grinnell Blvd.

Fontaine Blvd.

Goldfield Dr.