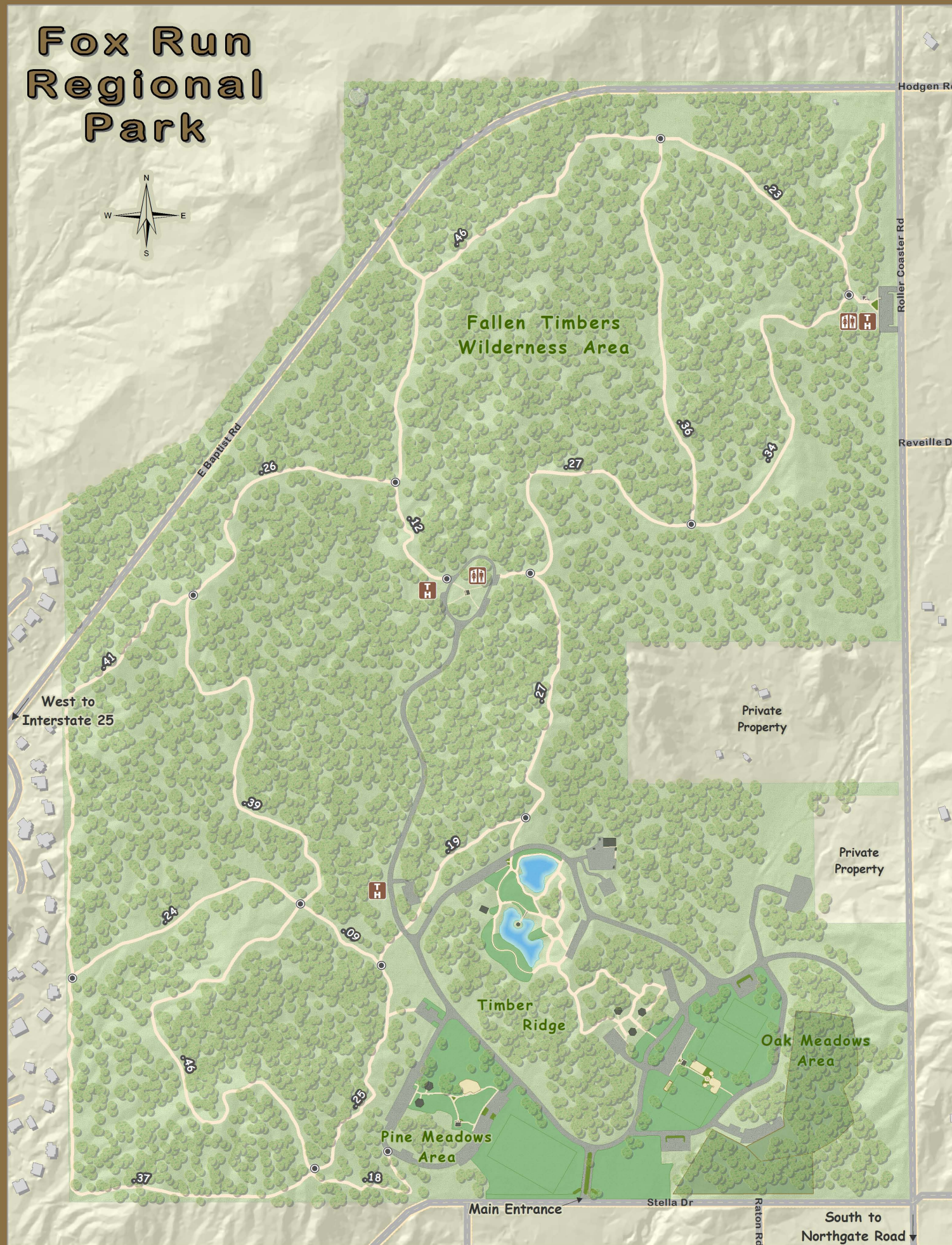
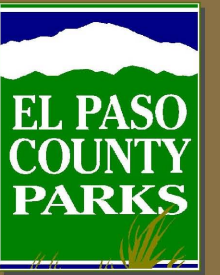


Fox Run Regional Park



Fox Run Regional Park is located approximately three miles east of Interstate 25 on Baptist Road. Visitors will find a restful environment among the thick forest of ponderosa pines. Timber Ridge provides an overlook of Aspen and Spruce Lakes as well as a picturesque setting of Pikes Peak as the mountain backdrop. Park guests will enjoy four miles of multi-use trails that wind through the Fallen Timbers area, pavilions, playgrounds, and Wedding Gazebo on the lake.



Location & Hours of Operation

2110 Stella Drive
Colorado Springs, CO 80921

Park Hours:
5 a.m. to 11 p.m.
Reservation Season
April – October
Call (719) 520-7529



Driving Directions:
Fox Run Regional park can be reached from Interstate 25, exit 156A to Northgate Road; east on Northgate Road for 3.5 miles; north on Roller Coaster Road for 1/2-mile to Stella Drive; West on Stella Drive.

Or, the park can be reached from Highway 24, North on Highway 83; west on Northgate Road for .5 mile; north on Roller Coaster Road 1.5 miles to Stella Drive.

